

PS5 V3.0 Smart Trigger Installation

This guide covers the installation of our V3.0 smart trigger mods.

For installation you will need a few tools. A Philips PH00 size screwdriver is required for opening the controller. You will also need a small pocketknife, razor blade or side cutters to remove a small plastic tab from the triggers. A plastic pry tool is recommended, but not necessary.

For BDM-040 Controllers you will also need a small diameter object such as a pin, paperclip or sim card removal tool to remove the trigger pin.

A pair of needle nose pliers and tweezers are great help in removing and installing the many ribbon cables inside the controller.

There are currently 5 versions of Sony controllers available. The BDM-010, BDM-020, BDM-030, BDM-040 and BDM-050. The image to the right shows how to identify them. The V3.0 mods will work ONLY in BDM-030, BDM-040 and BDM-050 controllers. For BDM-010 and BDM-020 you must use our V1.0 trigger mods.

This mod is compatible with all our rapid fire, programmable remap and easy mapper mods.

1: Use a tool to pry off the R1 button and check the structure to distinguish the controller models

BDM-010



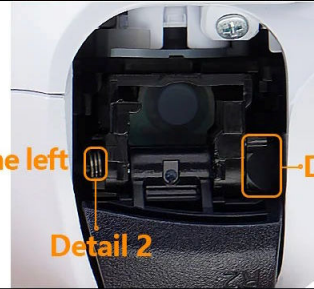
BDM-020



Spring on the left

Detail 2

Detail 1



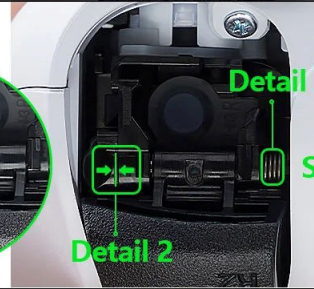
BDM-030



Detail 1

Detail 2

Spring on the right



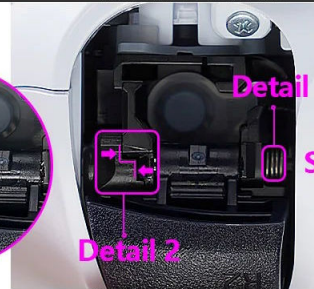
BDM-040



Detail 1

Detail 2

Spring on the right



BDM-050



Detail 1

Detail 2

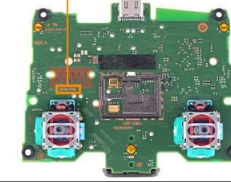
Spring on the right



2: Take apart your controller and check the mainboard

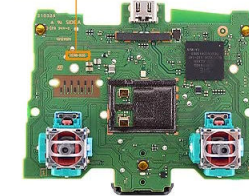
BDM-010

BDM-010



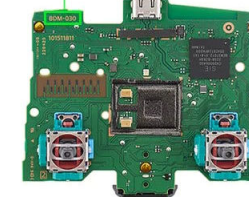
BDM-020

BDM-020



BDM-030

BDM-030



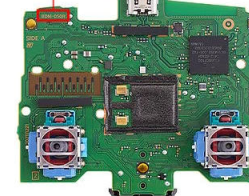
BDM-040

BDM-040



BDM-050R

BDM-050



PS5 V3.0 Smart Trigger Installation

We now have Video Installation guides for all 3 versions of controllers. If you prefer to watch a video of the installation in your specific controller, just click the link or scan the QR code with your phone.

[BDM-030 Video installation](#)



[BDM-040 Video installation](#)



[BDM-050 Video installation](#)



Trigger Mounting Parts

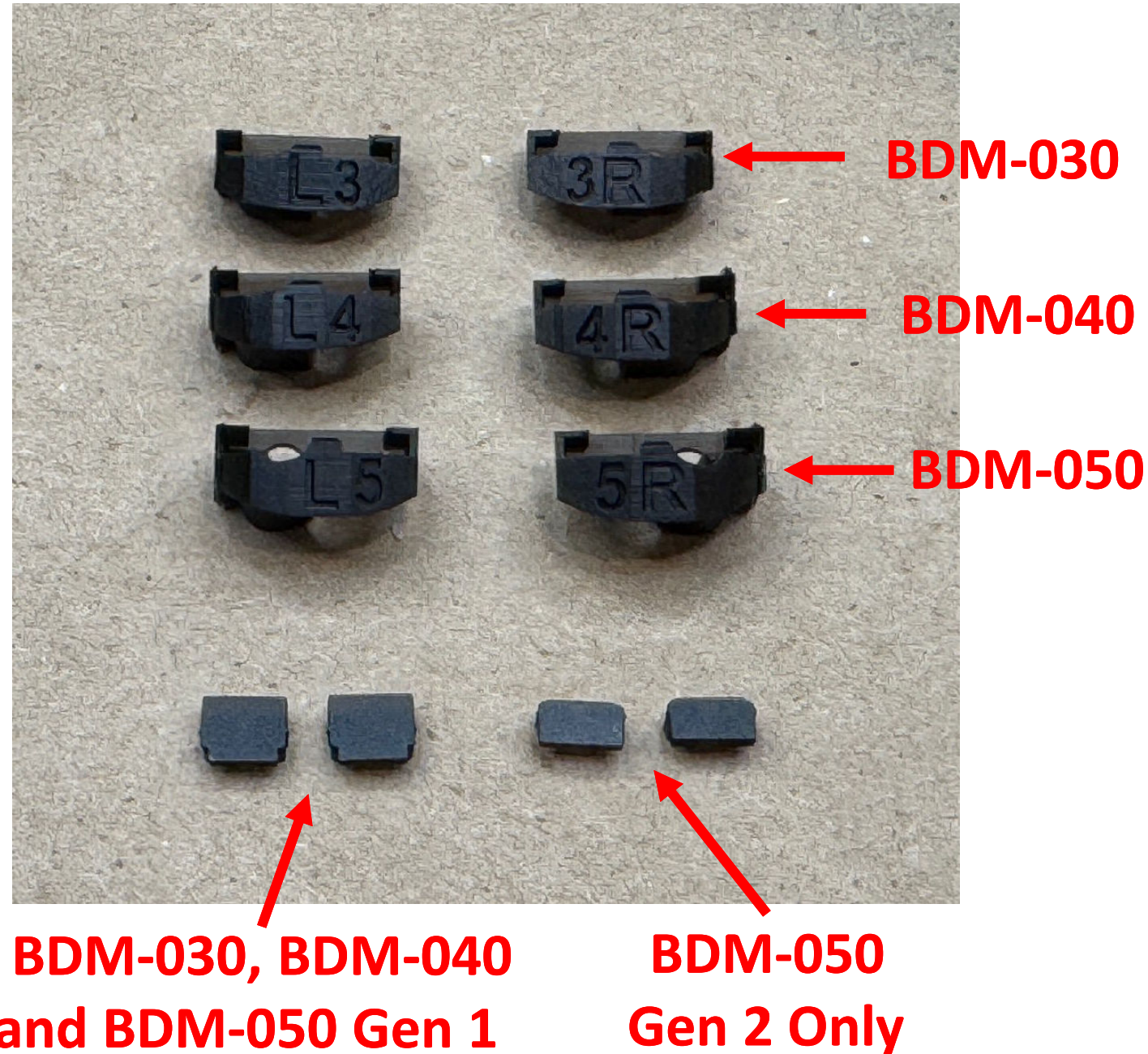
The kit includes 3 different sets of mounts. And 2 sets of trigger inserts.

The mounts are labeled with an L and R for the left and right triggers. Just remember that when the controller is open and flipped upside-down the triggers will be on opposite sides from normal.

Additionally, each is marked with a 3, 4 or 5. This corresponds to the controller version the mounts marked with a 3 are for BDM-030 controllers, the mounts with a 4 are for BDM-040 controllers and the 5 are for BDM-050 controllers.

The small black parts at the bottom are inserts for the triggers, the larger inserts are used for all BDM-030 and BDM-040 controllers, as well as the Gen 1 BDM-050 triggers.

The smaller set is only for the Gen 2 BDM-050 triggers. The difference will be shown at that part of the installation.



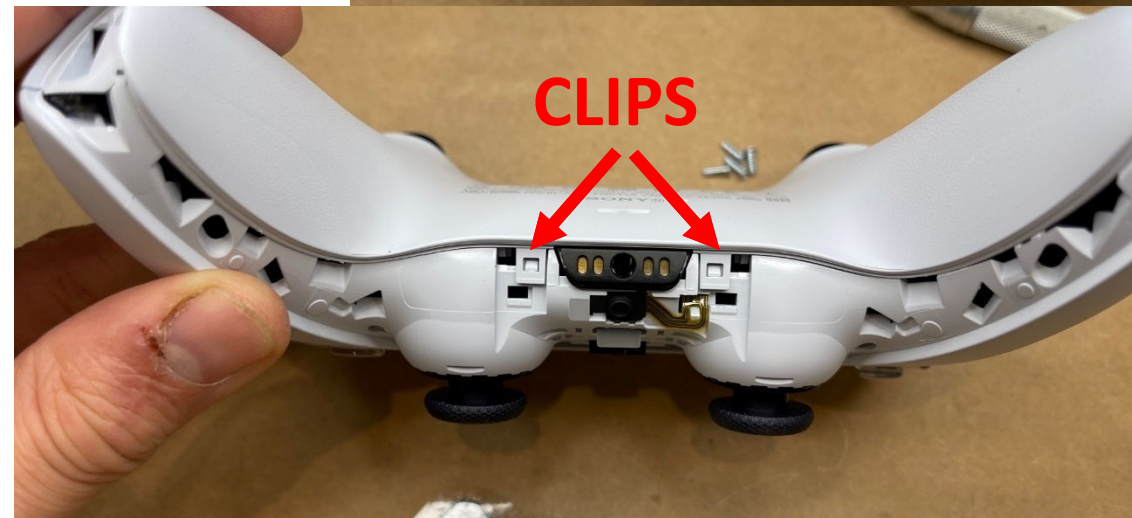
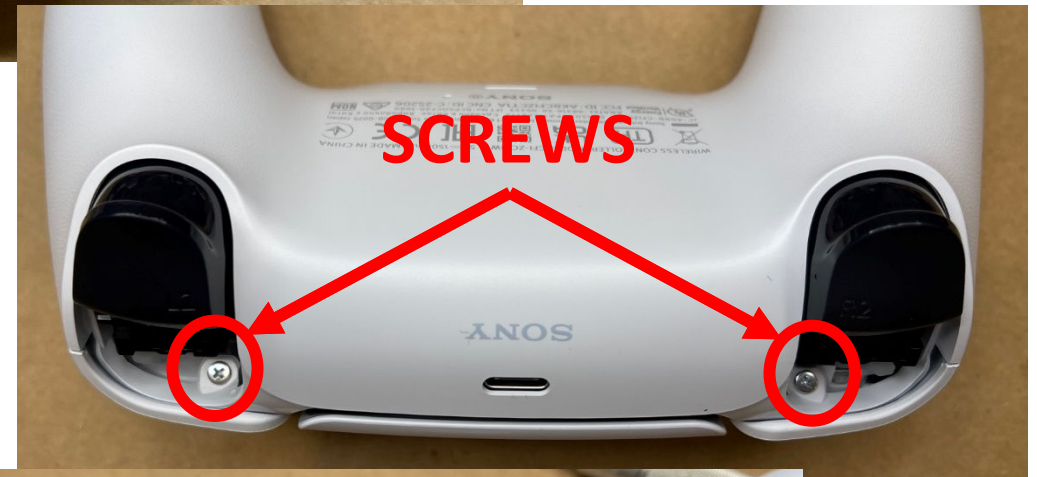
Opening the Controller

- To open the controller, you must first remove the trim piece around the thumb sticks and PS button. To do this start with the controller upside-down. Use a pry tool (your fingernail can also work just as well) place it between the shell and the trim to pop it out. Do the same to both sides.
- Flip the controller over and slowly work up both sides of the trim piece releasing the clips.
- Once all the clips are released you will need to lift the bottom of the trim piece over the thumb sticks and then out.
- Once removed flip the controller back over to reveal the 2 Phillips PH00 screws and remove them.



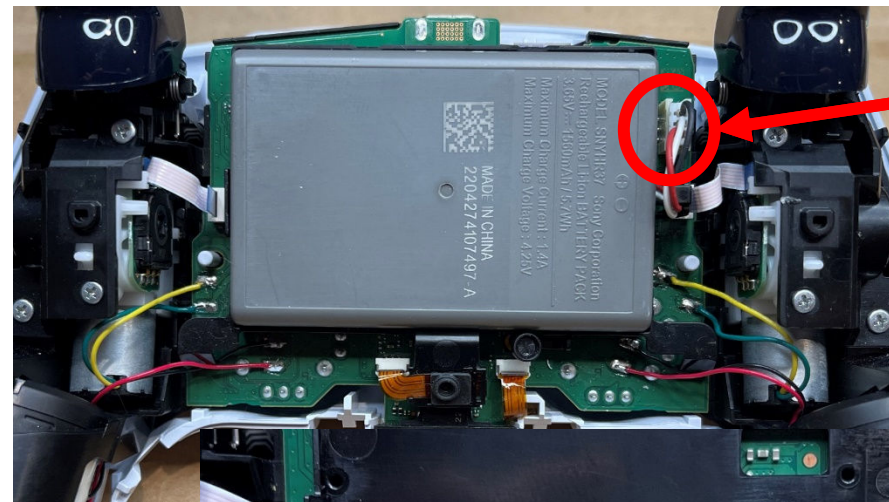
Opening the Controller Continued

- Next you will need to remove the R1 and L1 buttons. Again, using the pry tool, you will need to get behind the button, as shown in the picture, and pop it out. This takes a good bit more force than the trim piece to remove. If you do not have a pry tool, use the PH00 screwdriver or a pair of tweezers.
- Once removed you will see the second set of PH00 screws that must be removed.
- The final step to remove the back cover is to separate the shell starting at the end of one of the grips. While separating you will need to release the 2 clips shown in the bottom picture. Separate from the bottom opening like a clamshell until you feel resistance then push the shell up and out away from the triggers.

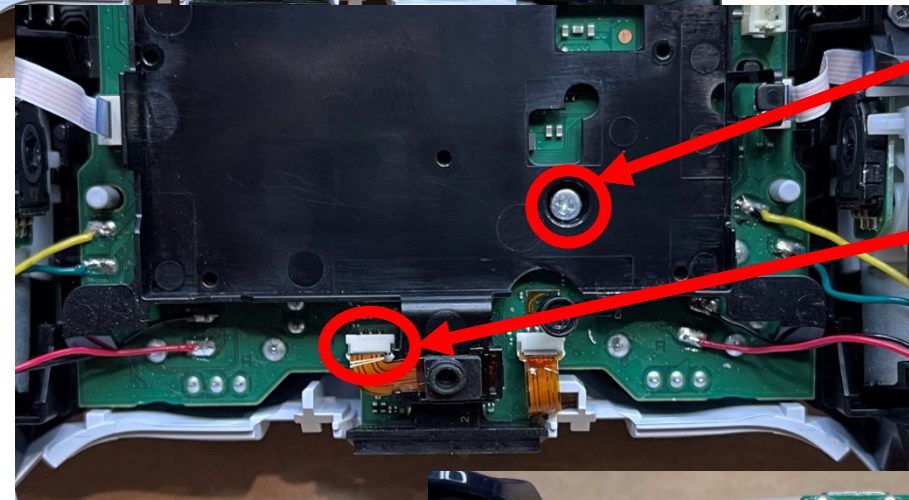


Opening the Controller Continued

- With the controller open you can remove the battery by unplugging from the circuit board.
- This reveals the battery tray which is held in by one Philips PH00 screw. Remove this screw. You will also need to unplug the microphone which is clipped into the bottom of the tray.
- Next is to unplug all the ribbon cables from the main circuit board. Some of these are stubborn and best removed by grasping firmly as close to the plug as possible with a pair of needle nose pliers.



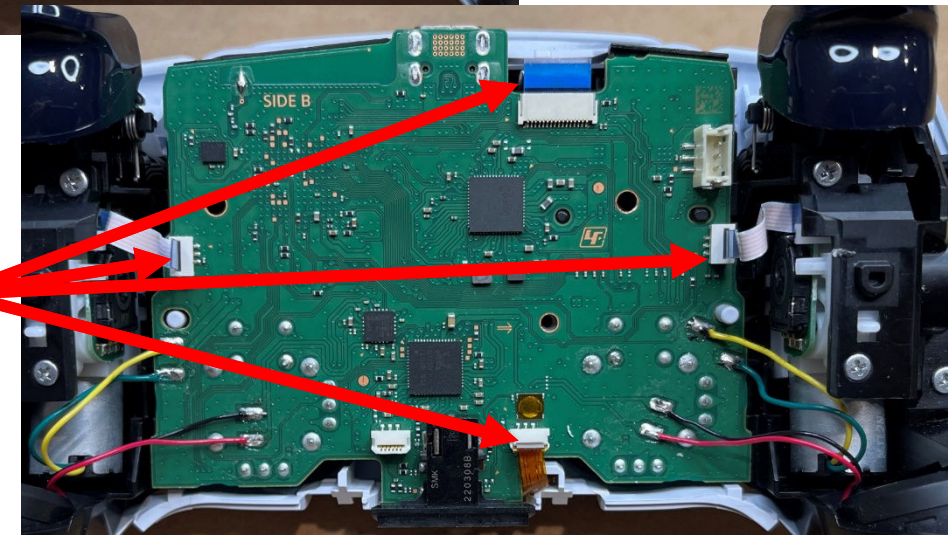
BATTERY PLUG



SCREW

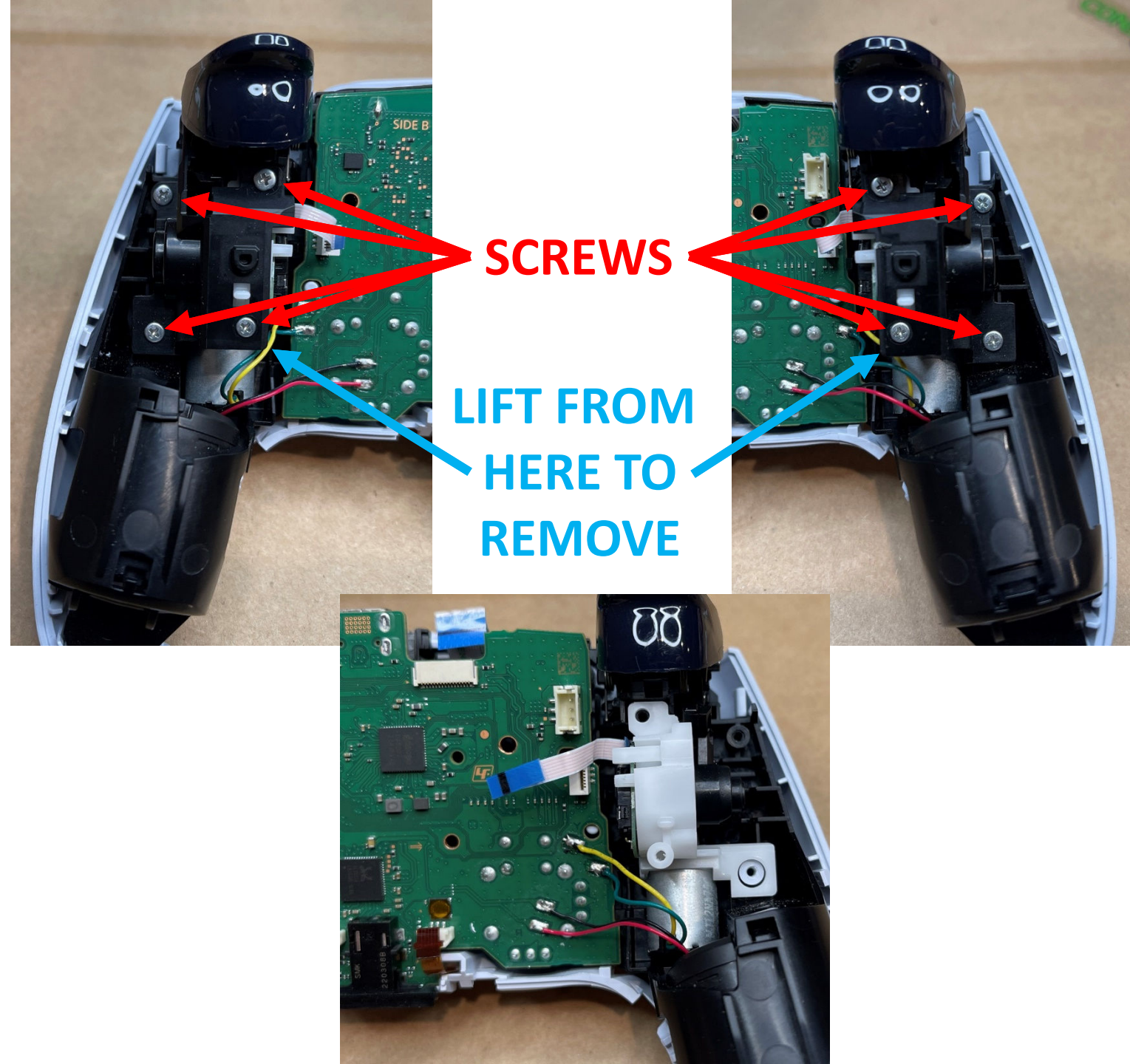
**UNPLUG
MIC**

RIBBON CABLES



Opening the Triggers BDM-030 ONLY Skip to Page 8 for BDM-040 Or Page 10 for BDM-050

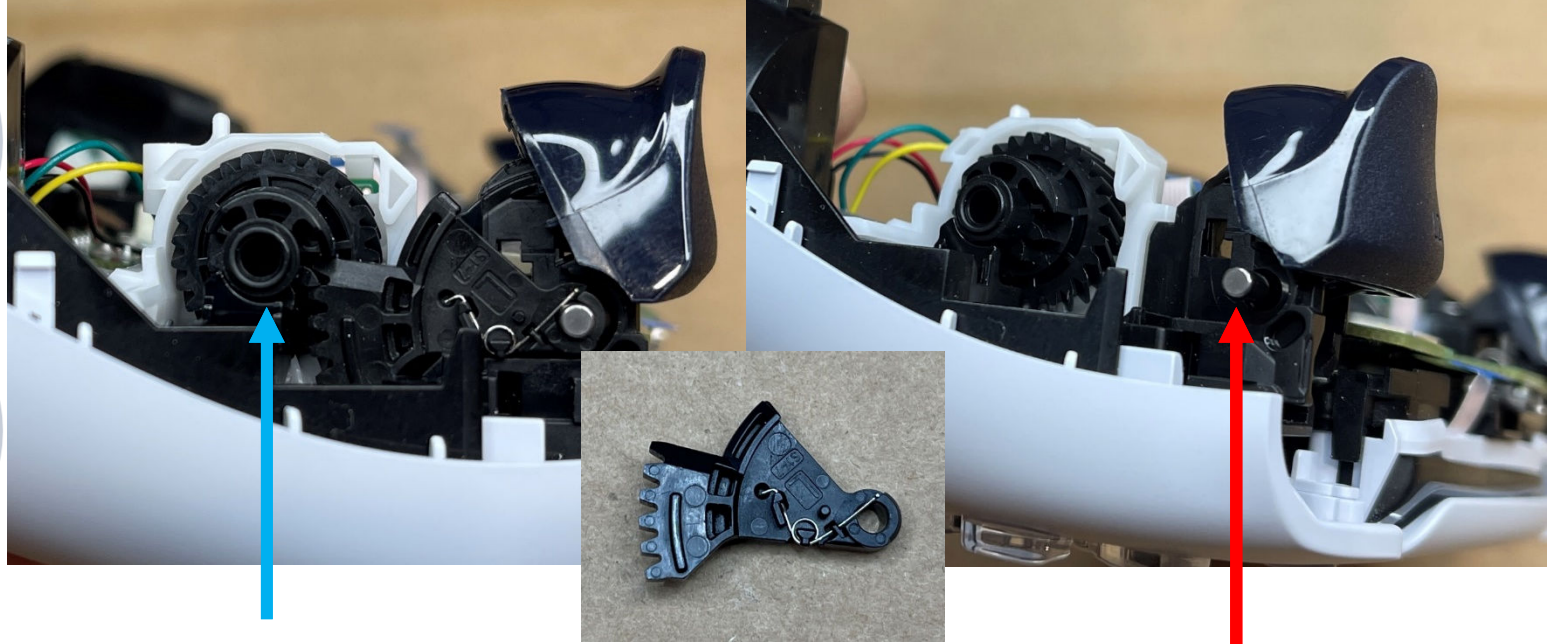
- Now you must remove the covers from the Trigger modules. These are held on by 4 screws on each side.
- The covers also have clips holding them on. Once the screws are removed you can remove the cover by lifting from the inside lower corner.
- The lower pictures shows the trigger with the cover removed.



Opening the BDM-030

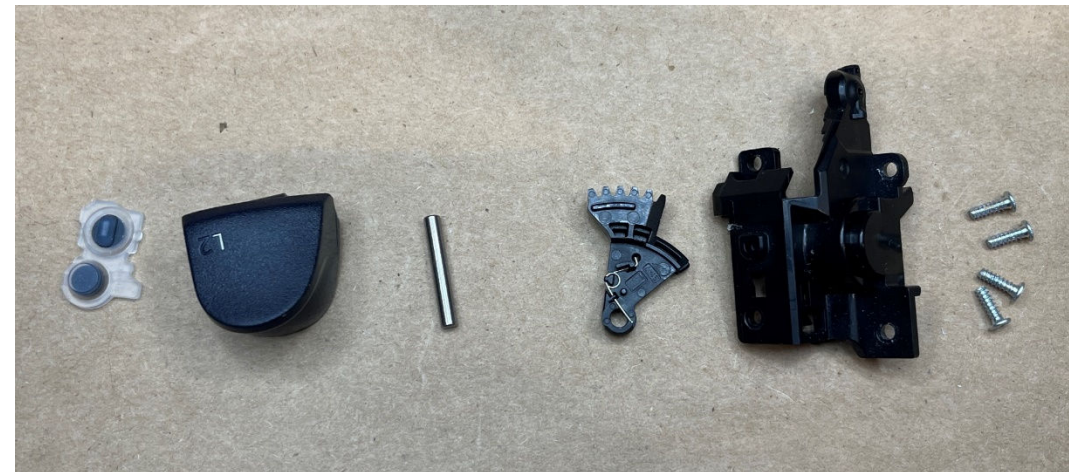
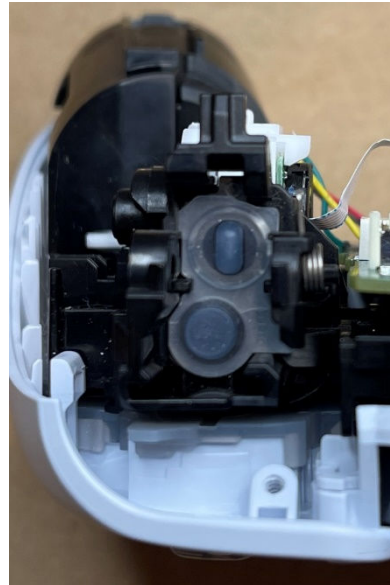
Triggers Continued

- With the cover off the trigger, you will need to remove the adaptive trigger actuator arm. This piece will NOT be reinstalled.
- Pay attention to the position of the gear inside the trigger, this needs to stay in the same position (rotated all the way forward toward the trigger)
- Remove the pin holding the trigger by pulling it out. Then remove the trigger.
- Remove the rubber pad from the front of the triggers.
- You should now have all the pieces at the right for each trigger.
- Skip to page 10 to Continue.



**KEEP GEAR IN
THIS POSITION**

Remove Pin



Opening the Triggers

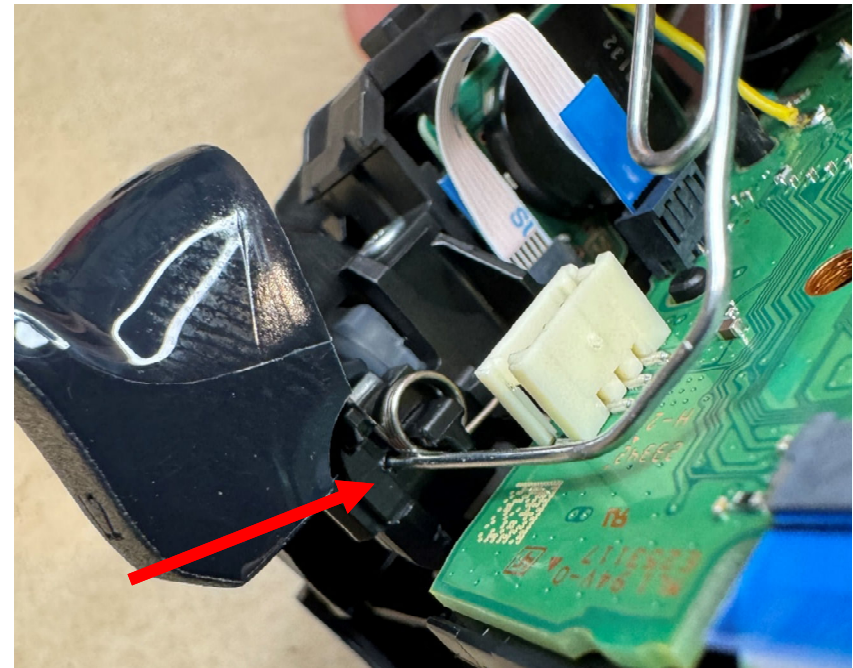
BDM-040 ONLY

Go Back to Page 6 for BDM-030

Or

Go to Page 10 for BDM-050

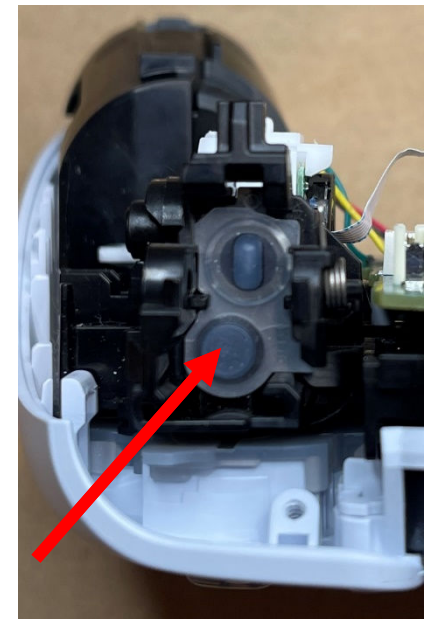
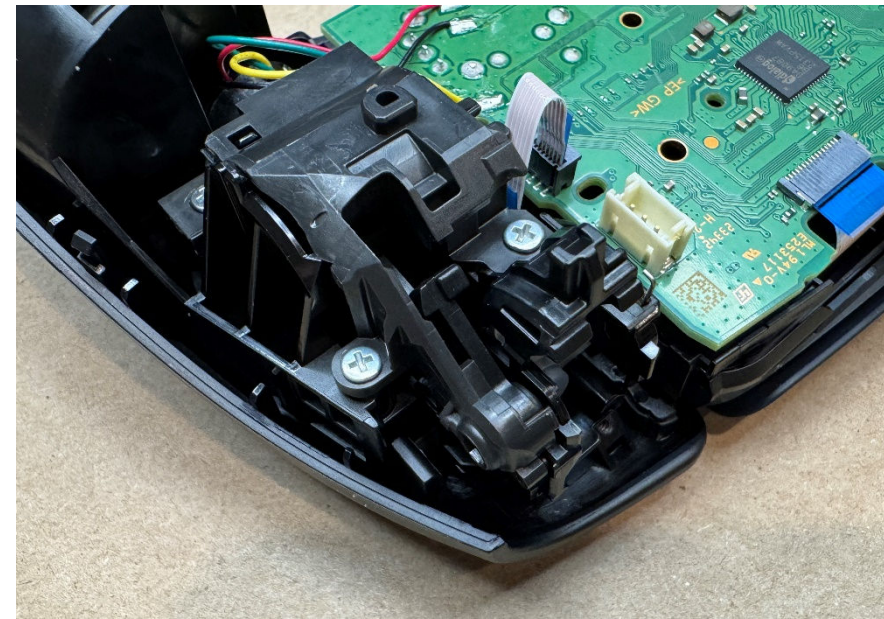
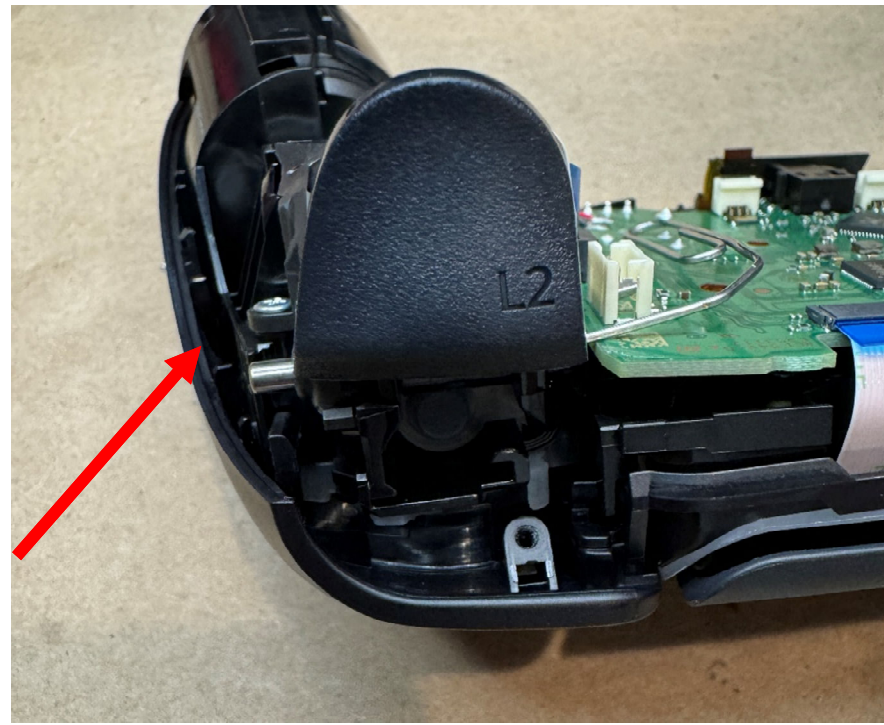
- To remove the triggers, R2 and L2, from the BDM-040 controllers you must use a small pointed object to push the trigger pin out.
- There is a small hole only 1mm wide just in front of the spring. See close-up image to the right.
- The second picture shows the same hole with a paper clip inserted to push the pin out.



Opening the BDM-040

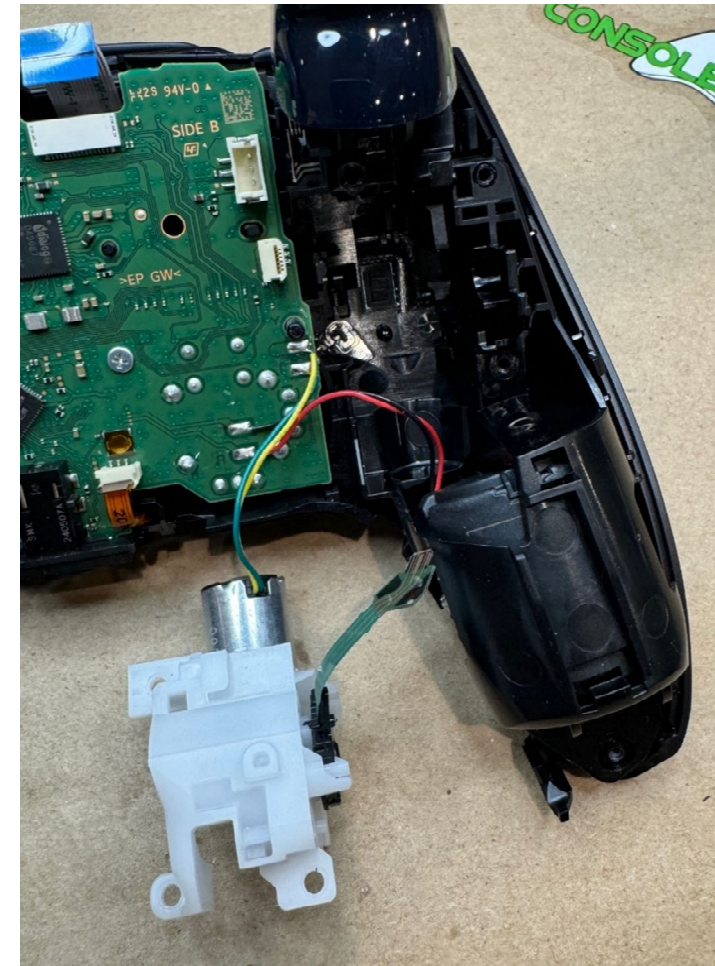
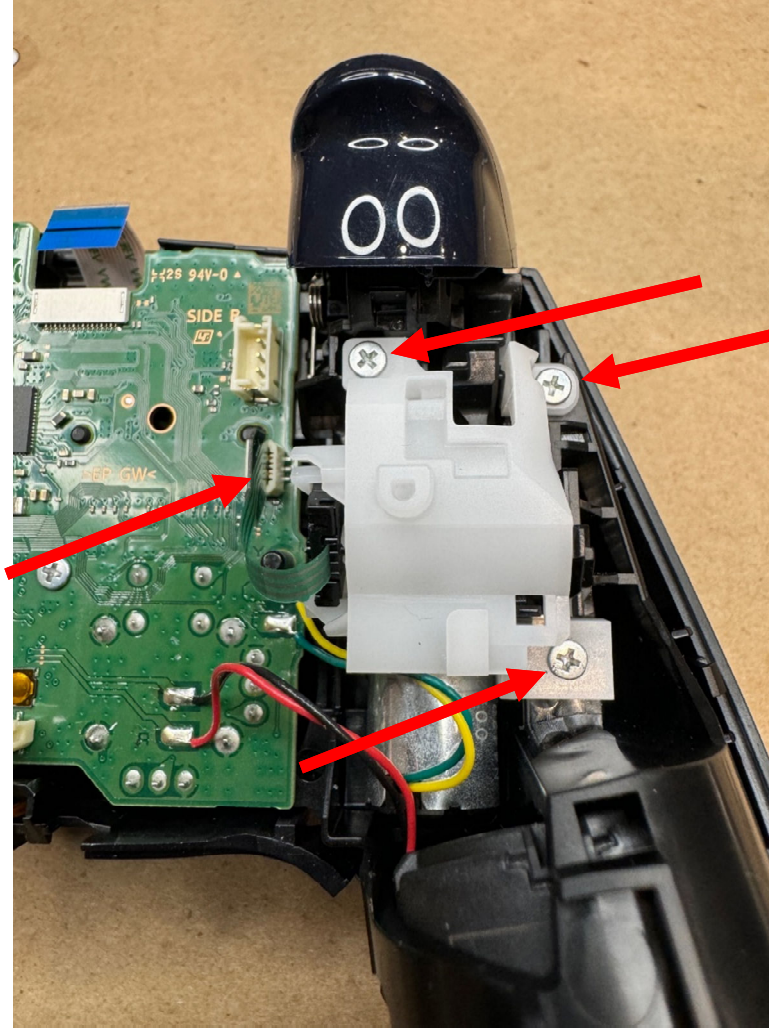
Triggers Continued

- You should now see the trigger pin sticking out from the other side.
- Use a small pair of pliers or the thick end of the tweezers to grab the pin and pull it out.
- Finally remove the trigger and the rubber pad from the front of the trigger housing.



Opening the Triggers BDM-050 ONLY Go Back to Page 6 for BDM-030 Or Page 8 for BDM-040

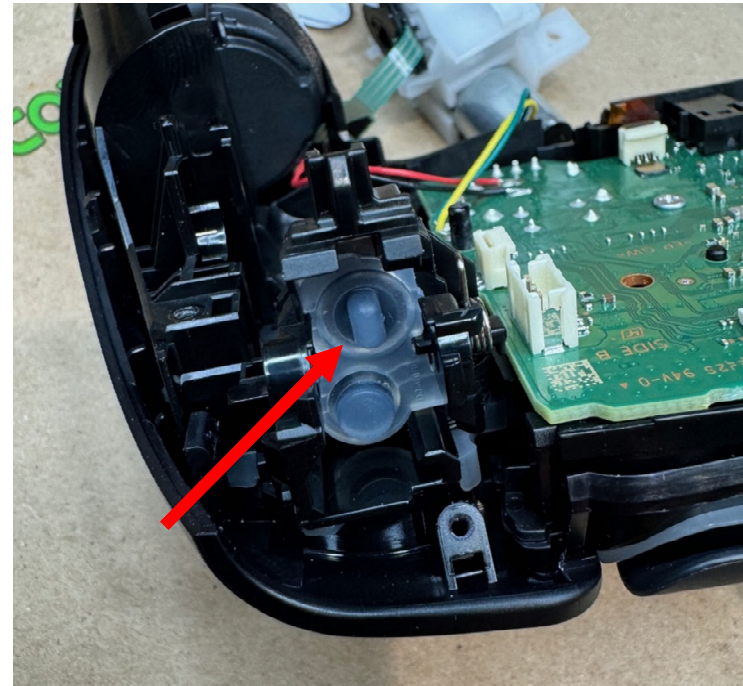
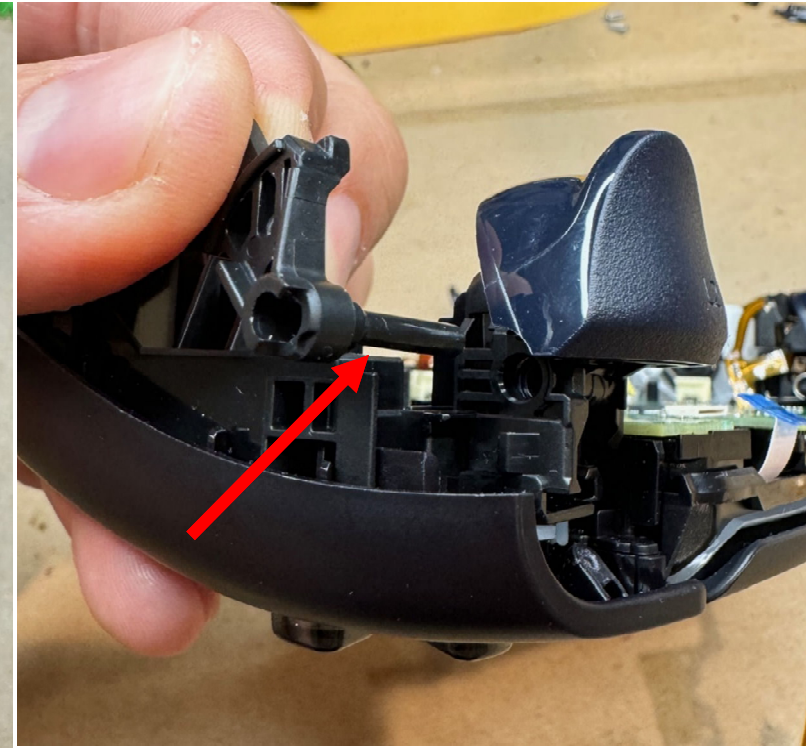
- To remove the triggers, R2 and L2, from the BDM-050 controllers you must remove the 3 screws holding the adaptive trigger motor and gears, as well as pull out the small ribbon cable from the board.
 - **When reinstalling the trigger DO NOT plug the ribbon cable back in. This will be left out so the adaptive trigger cannot activate.**
- Lift up on the white plastic assembly and remove it. The wires for the motor will still be attached.
- The second picture shows the adaptive trigger assembly removed



Opening the BDM-050

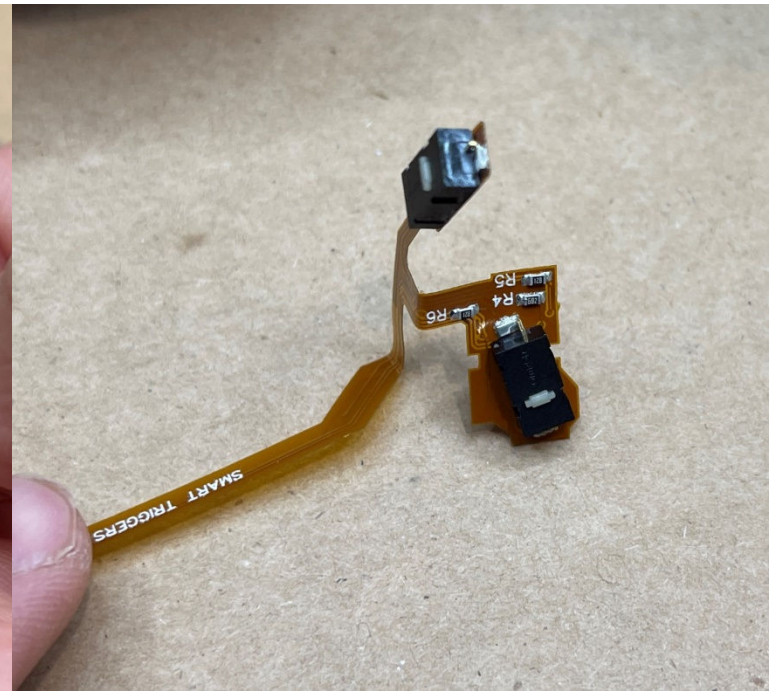
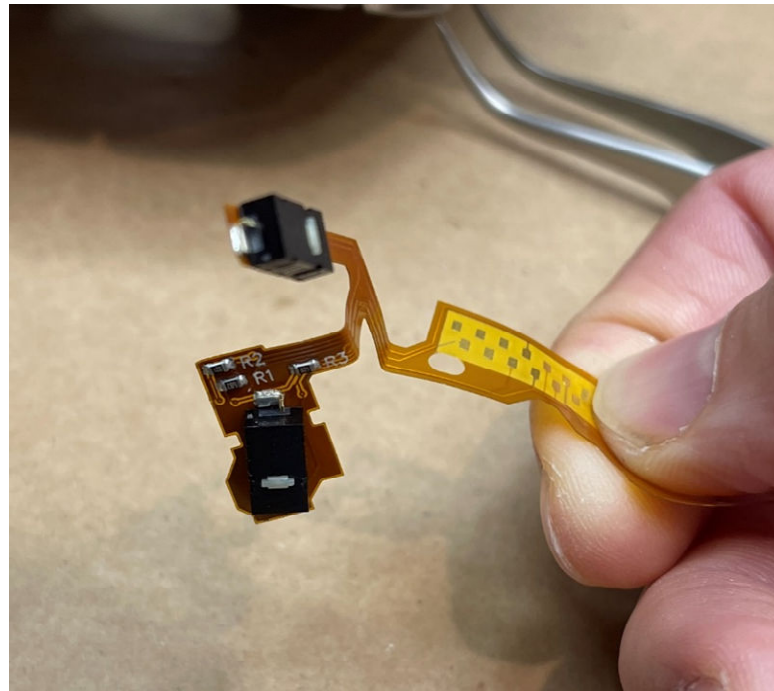
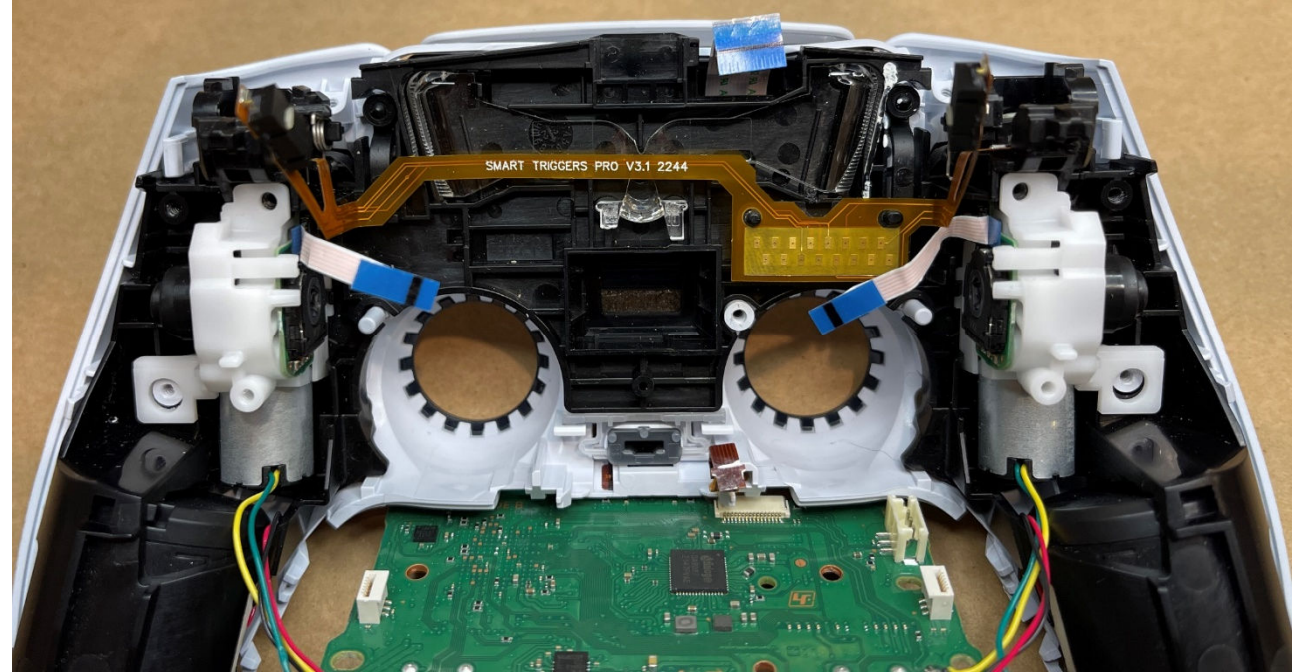
Triggers Continued

- From the outside you will see a partial gear, rotate this all the way up so it is touching the trigger and then pull it straight out. As you can see the gear is also the hinge pin for the trigger.
- The trigger can now be lifted off the plastic assembly.
- Finally remove the rubber pad from the front of the trigger housing.



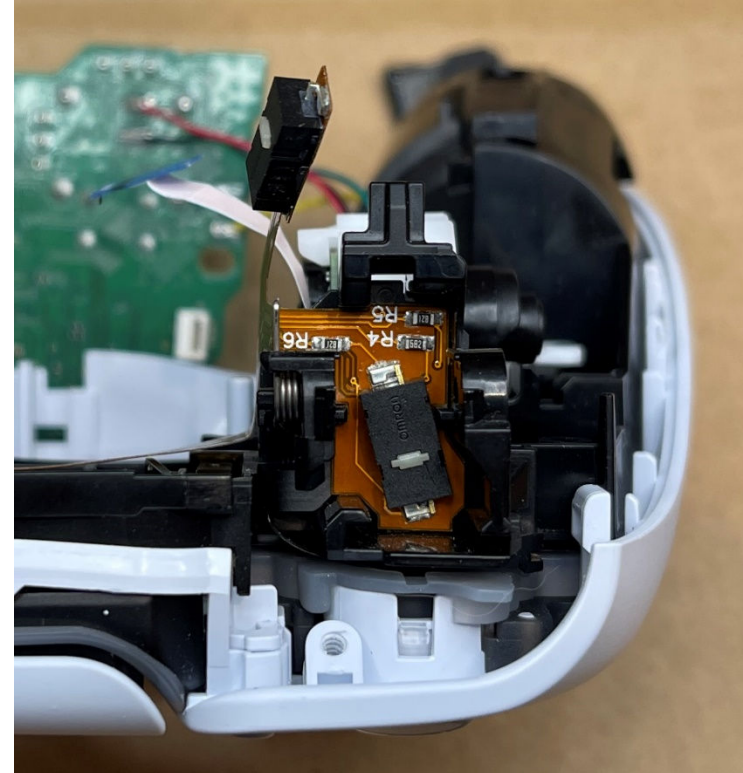
Installing the Smart Triggers

- Now you can begin the installation of the smart trigger mod. To do so first lift and flip over the circuit board from the controller. Be cautious as there are still wires attached for the rumble motors.
- The controller is shown here with the mod properly in place.
- Before placing the mod, it will be very helpful to make two 90-degree bends on each side as shown in the lower pictures. There are white lines on the mod to indicate where you should bend the flex. This will allow the mod to easily fit into place and lay flat.
 - Please note the flex is meant to “flex” you can bend the mod at these points completely in half and then extend back out to the proper angle. This helps create a sharp 90-degree corner as shown.



Installing the Smart Triggers Continued

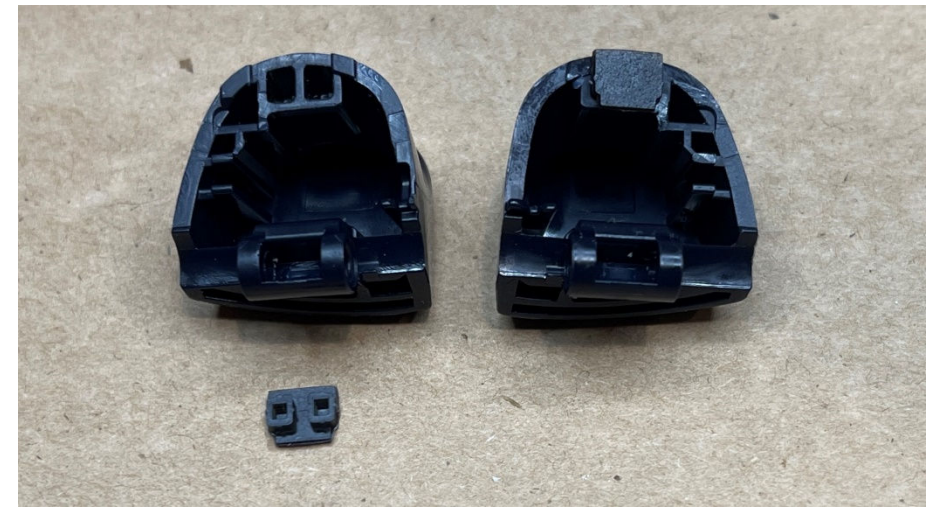
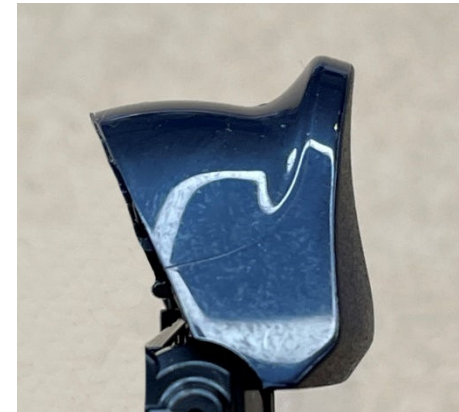
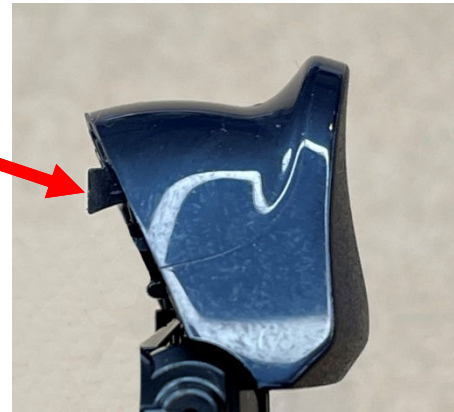
- Install the Flex into the space where the Rubber pad was originally. This is a tight fit and may take a little work to get into place.
- Ensure that the mod flex is completely pushed into the space. Using tweezers or a small screwdriver can help.
- Before moving further install the R1 and L1 buttons to make sure they can move and press the button properly.
- If they do not move double check that the flex is fully flat against the housing.
- R1 and L1 will have a very short travel as the plunger will rest directly on the button. If you would like more travel, you must sand or trim down the round plastic post on the back side of R1/L1



Installing the Smart Triggers Continued Gen 1 Trigger Prep

- Shown here is a gen 1 trigger found in all BDM-030, 040 and early 050 controllers. See the next page for Gen 2 050 Triggers.
- Prepare the triggers – Before reinstalling the triggers you will need to remove the small tab on the back of the trigger. This is easily done with a small pocketknife, Razor blade or side cutters.
- Next install the larger size of the 2 included plug sets into the back of the triggers. The narrow side must be toward the bottom of the trigger.

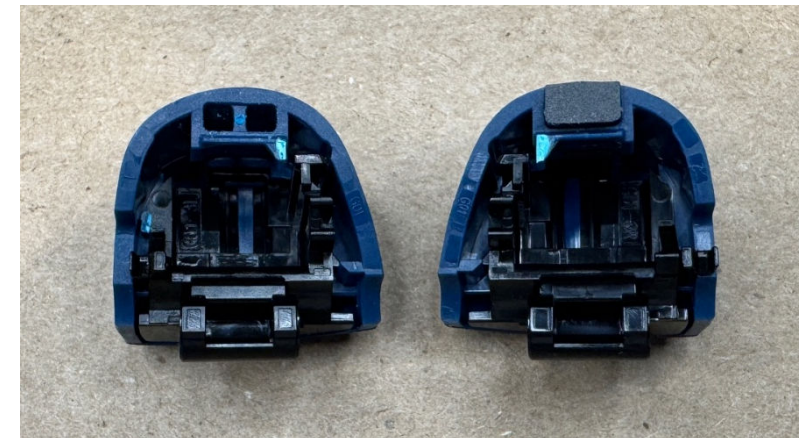
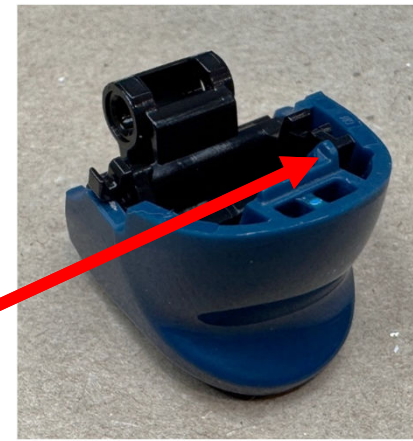
Remove Tab



Installing the Smart Triggers Continued Gen 2 Trigger Prep

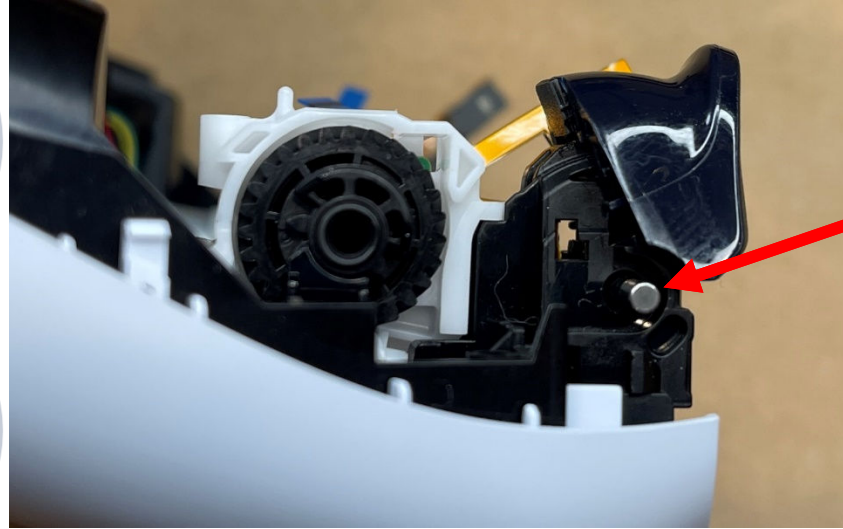
- Shown here is a gen 2 trigger found in later version BDM-050 controllers. These first appeared in January 2025. The holes at the top of the trigger are smaller and will not fit the larger inserts.
- Prepare the triggers – Before reinstalling the triggers you will need to remove the small tab on the back of the trigger. This is easily done with a small pocketknife, Razor blade or side cutters.
- On this version trigger there is also a small lip below the holes. This lip can remain but the small tab to one side must be removed.
- Next install the smaller size of the 2 included plug sets into the back of the triggers. These will fit snugly into the two openings at the top of the trigger. They will only fit in one direction.

Remove Tab



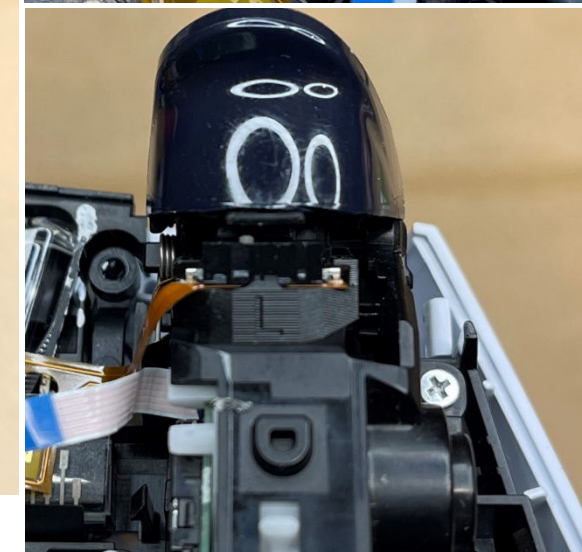
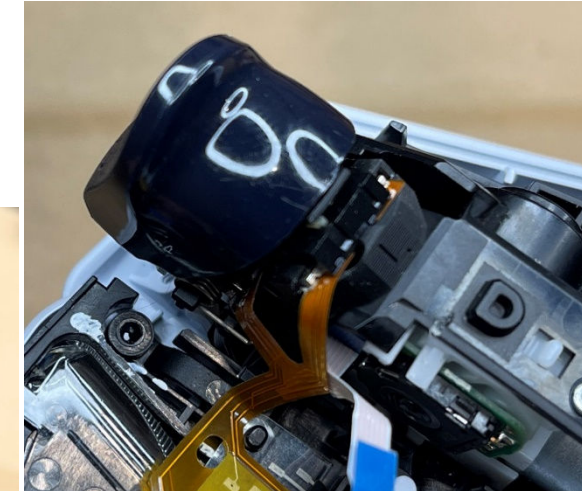
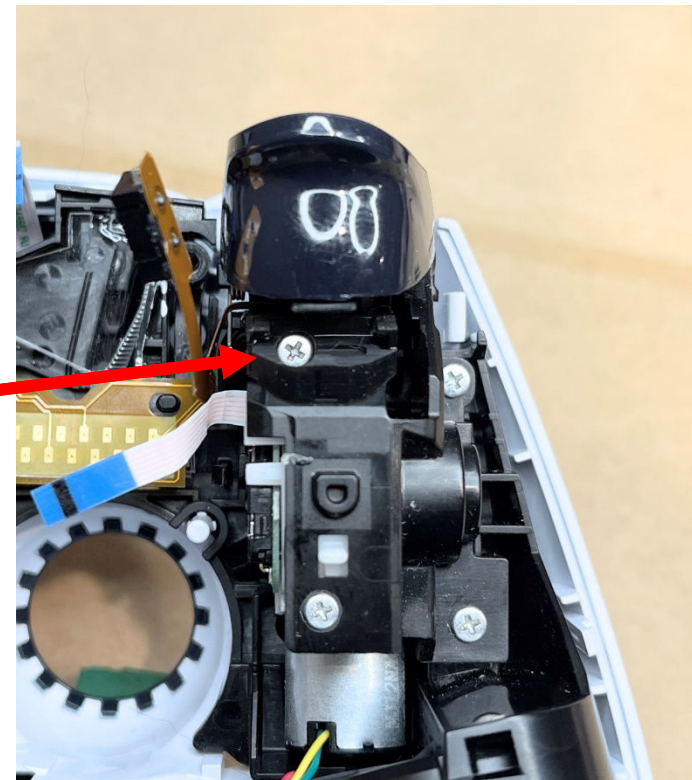
Installing the Smart Triggers Continued

- Reinstall the trigger using the small metal or plastic pin removed earlier. Make certain the pin is fully inserted. Test the trigger movement before moving on.
- Make certain the small plug installed in the previous page is still properly in place.
- **DO NOT REINSTALL THE ACTUATOR ARM (BDM-030 Only)**
- **On BDM-050 make sure the gear/trigger pin is rotated all the way down away from the trigger.**
- Replace the plastic cover over the trigger. (BDM-030 and BDM-050)
- Place the included trigger mounts into place behind the triggers. They are marked with an R and L for the right and left triggers. (note: the controller is upside-down so the left trigger will be on your right) Install the screws, one of which will go through the new trigger mount.
- Carefully slide the trigger button into the mount. The button will snap past the small bump at the edge of the mount and sit flat.
- Test the triggers to ensure they click and move properly. The plug in the trigger will press against the button.



**REINSTALL TRIGGER
AND PIN**

**INSTALL
SCREWS
WITH
TRIGGER
MOUNT**



Installation Complete Reassemble The Controller

- The installation of the mod is complete, and you can reassemble the controller.
- Make sure the mod is centered over the 2 pegs with the controller flex. Then reinstall the circuit board.
- Ensure all ribbon cables are connected except for the ribbons going to the triggers, These should be left unplugged so the adaptive triggers cannot activate.
- Reinstall the battery tray and put in the single Philips PH00 screw.
- Plug in the battery and place it in the tray.
- Place the back cover and reinstall the 4 Philips PH00 screws.
- Press back in the R1 and L1 bumper buttons.
- Re-install the black trim over the thumb sticks.
- You should be left with the 2 actuator arms (BDM-030 only) and the rubber pads from behind the triggers.

Excellent your Done!

