

PS5 BDM-020 Mod Information

- Sony has released a new controller version labeled BDM-020. We have new version mod in process to better support these new controller. However, the current mods do still work with 2 small modifications to the original installation.
- The image to the right can help you identify which version controller you have. For the BDM-010 you can follow the installation video here: https://youtu.be/3gs0SgXBF_g
- This same video should be used for the BDM-020 with the workarounds on the following pages.

Method 1: Check the part number on the back of the controller

BDM-010



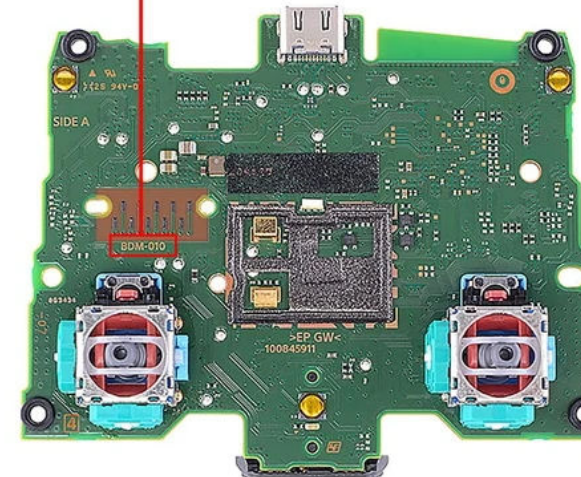
BDM-020



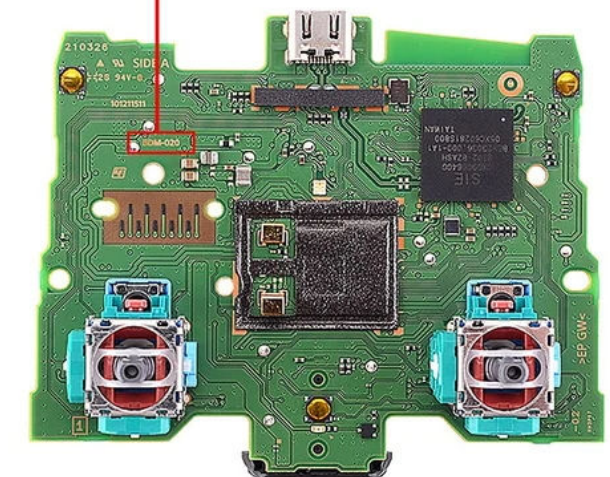
Method 2: Take apart your controller and check the mainboard



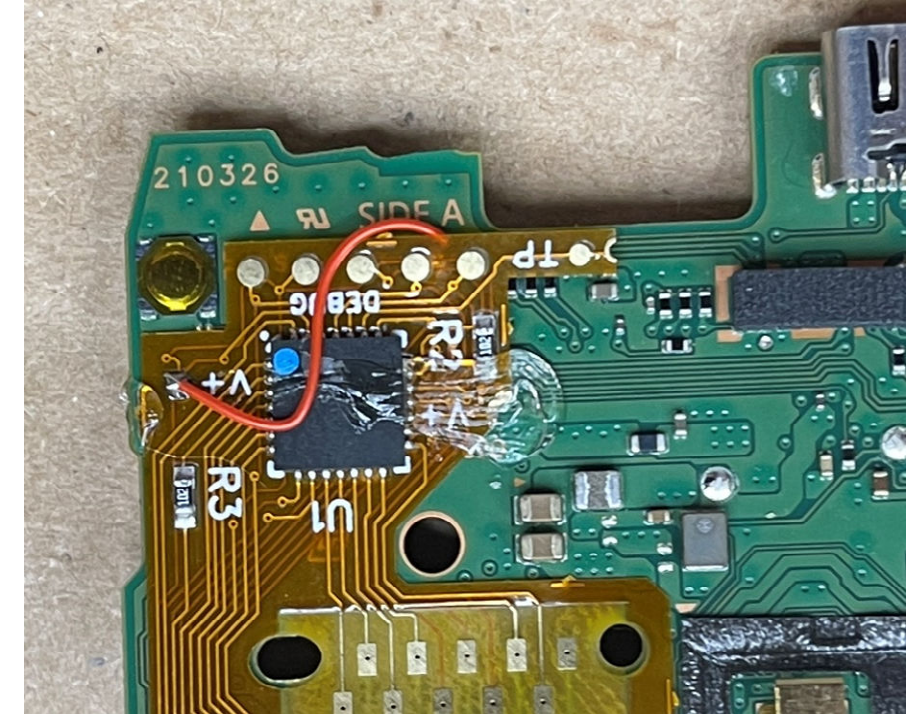
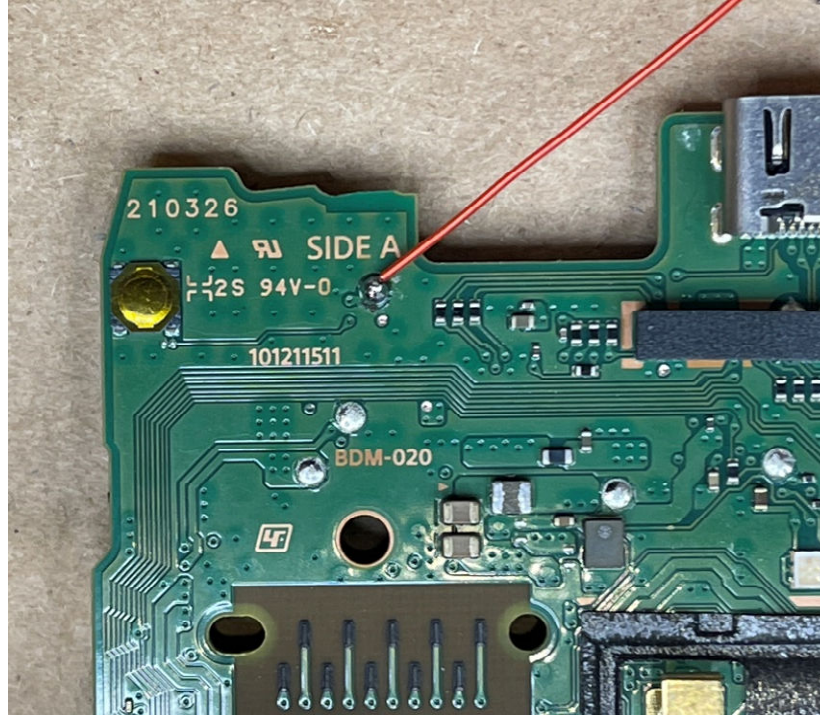
BDM-010



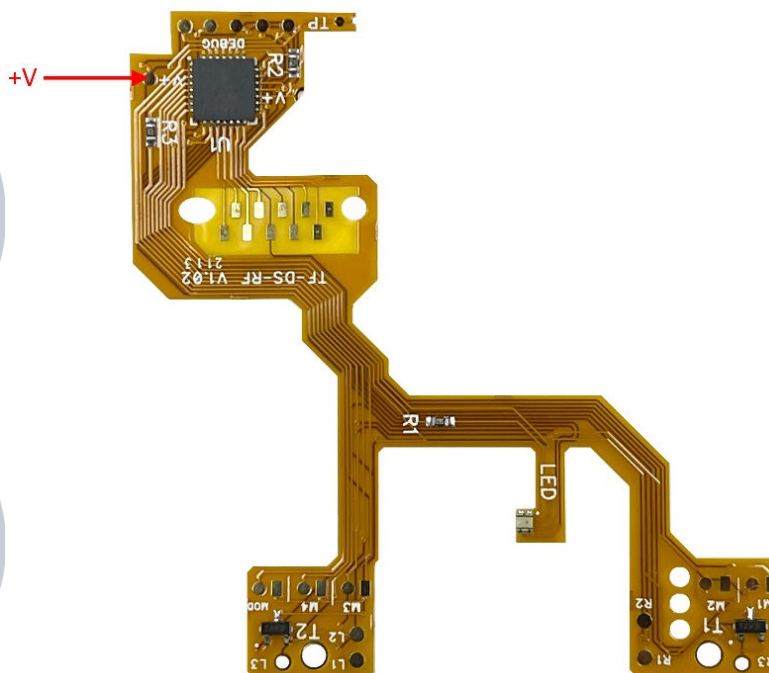
BDM-020



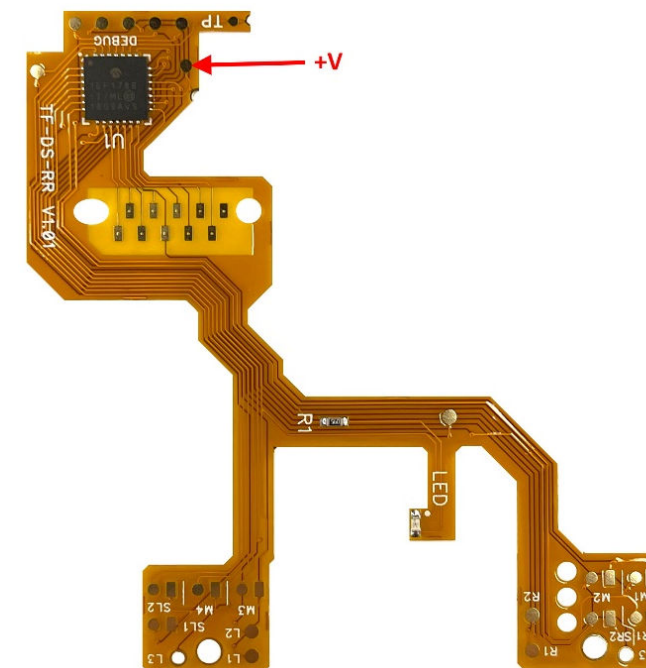
- The power connection has moved on the BDM-020. This requires a small piece of wire to be used to make this connection.
- To the right you can see where this new connection is located (red wire attached).
- And an example of a rapid fire mod installed with the wire.
- Please note that the pad you will connect the power wire to on the mod is different between the Rapid fire and the Programmable Remap mods. See pictures to the right for the pad you should use.
- Additionally, on the BDM-010 controllers the power connection was used to hold the mod in place. This does not work for the BDM-020, therefore you will want to use hot glue or tape to hold the mod in place. You can use hot glue under the mod where the black IC chip is located on put it on the edge like our example picture. Just be sure to keep hot glue out of the lighter yellow pad connection area of the mod.



Rapid Fire Mods



Programmable Reflex Mods



- The second step is using the new location for the trigger connections. On the BDM-020 the trigger connection points have moved. The image to the right shows the new location.
- The rest of the mod installation follows along with our installation video.
- https://youtu.be/3gs0SgXBF_g

