

OVERVIEW

Our PCB paddles are designed to mount outside of your controller for a quick and secure installation. It requires drilling 3 holes and some soldering to connect the paddles to your controller or mod. These paddles work with all of our Rapid fire, Remap or Easy mapper mods (**Sold Separately**). They will also work with other mods which allow for adding buttons to your controller and can also be wired directly to some controllers. Direct wiring will not be covered.

COMPONENTS

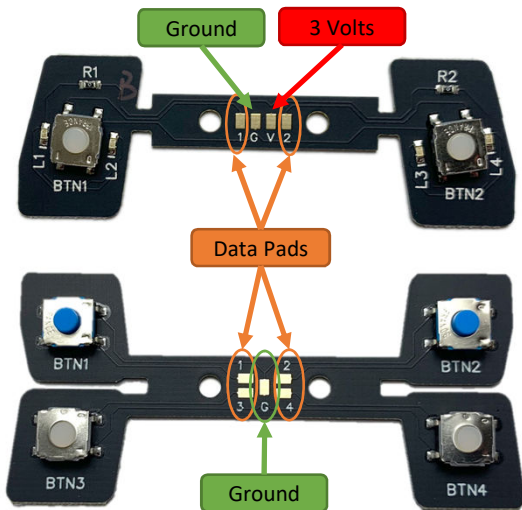
Your Paddle kit will include the paddle, 2 screws, 4 plastic nuts, 4 plastic washers and some wire.

2 or 4 button PCB Paddle Installation

1 PADDLE PADS

Each paddle has 2 or 4 buttons. The data side of these buttons correspond to the pads labeled "1-4" at the center of the paddle. The paddle will also have a ground pad labeled "G". This is a shared ground that runs to all buttons.

The 2 button paddles also have an option for LEDs. For these to work the pad labeled "V" must also be connected to a 3v positive connection in the controller or on the mod.



2 MOD PADS

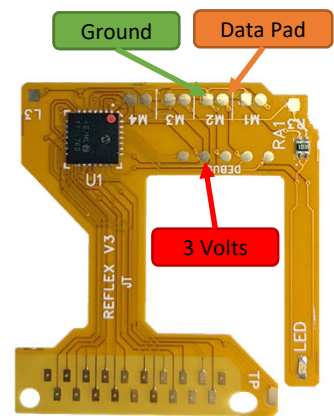
Below is one of our PS4 Reflex Remapping mods (**NOT INCLUDED**). These mods, as well as the Xbox One counterpart, allow for adding up to 4 buttons. Our rapid fire mods allow for only 2 additional buttons.

All of our mods follow the same strategy, you will see pads labeled "M1" and "M2" on all mods and additionally "M3" and "M4" on the Reflex mods. These are your paddle button connections.

For each pad M1-M4 you have a round data pad and a square ground pad. You will need to solder a wire for each button's data connection. For example, solder a wire from the "1" pad on the paddle to the round pad of "M1" on the mod and the "2" pad on the paddle to the round pad of "M2" on the mod.

No matter how many buttons you connect you will only need one ground "G" wire soldered from the paddle to any one of the square pads for M1-M4.

The Positive 3 volt connection can be found in 1 of the 5 pads labeled "DEBUG." You will need to use the pad under the "U".



MODS FROM OTHER COMPANIES WILL BE DIFFERENT!
If using a mod other than one of ours you will need to contact that manufacturer for information on connecting buttons/paddles.

3 PLACEMENT AND DRILLING HOLES

The paddle requires 3 holes to be drilled, 2 for the screws and 1 for the wires. To determine the hole placement it is best to place the paddle against the shell with the buttons facing toward you so it lays flat against the shell and you can easily mark the location for the screw holes with a pen or pencil.

For PS4 controllers the placement is easy, you will want to align the holes in the paddle so they are centered both vertically and horizontally on the barcode that is on the label. While you can move up or down from this position, due to the curved back of the PS4 shell, moving from this default location will result in different amounts of travel for the buttons.

For the Xbox One controllers you will have a little more freedom in placement of the paddle because the back has a much larger flat surface. See below for the general placement we like to use.

• Please note the paddle is installed with the buttons toward the controller, we only have them placed this way in the pictures for easier marking of the holes.

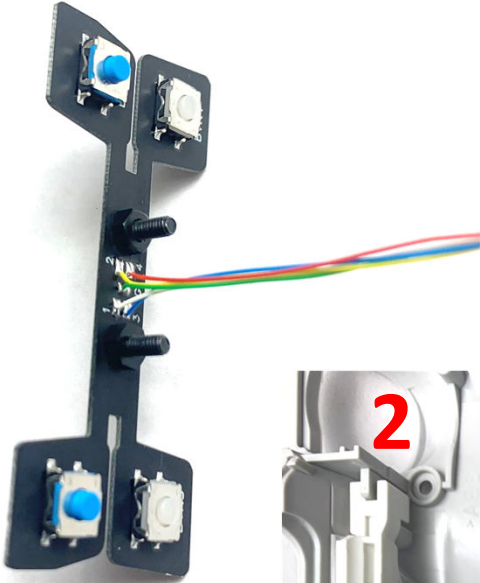
Once you have marked your 2 screw holes you can move the paddle and drill the holes. The screws are 2.5mm diameter so you will want a slightly larger drill bit. We recommend a 2.8mm or 7/64" drill bit. Drill your marked holes then drill a 3rd hole right in the middle of these 2 holes for the wires.



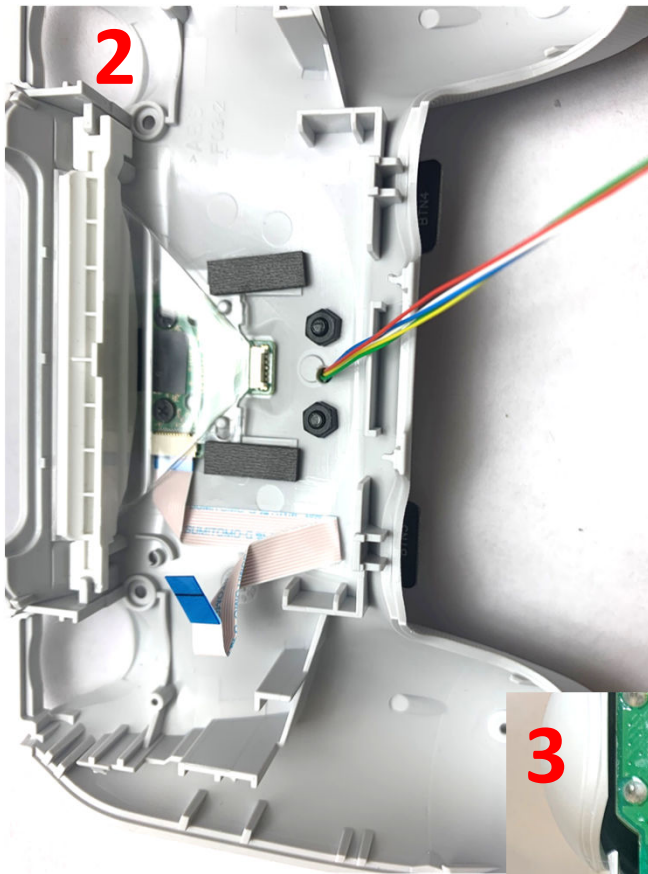
4 ASSEMBLY

With you holes drilled you can now assemble to paddle. To do this solder wires to the pads on the paddle. Wires around 5" (13cm) will give you good length for connecting to the mod inside the controller. Be sure to note which color wire is soldered to each pad. Then install the screws from the side of the paddle without the buttons and fasten on one nut to each screw as shown in picture 1 below. Optionally, you can add 1 or 2 washers before the nut if you would like more clearance between the buttons and the shell. Place the wires through the center hole and screws through the other 2 holes. Be sure the paddle is oriented correctly with the numbers/letters right side up. Then fasten the second set of nuts inside the controller as shown in the second picture below. Finally, solder the wires to a mod as show in the 3rd picture. (PS4 reflex V3.2 shown here, mod not included with the paddle and for demonstration purposes only)

1



2



3

